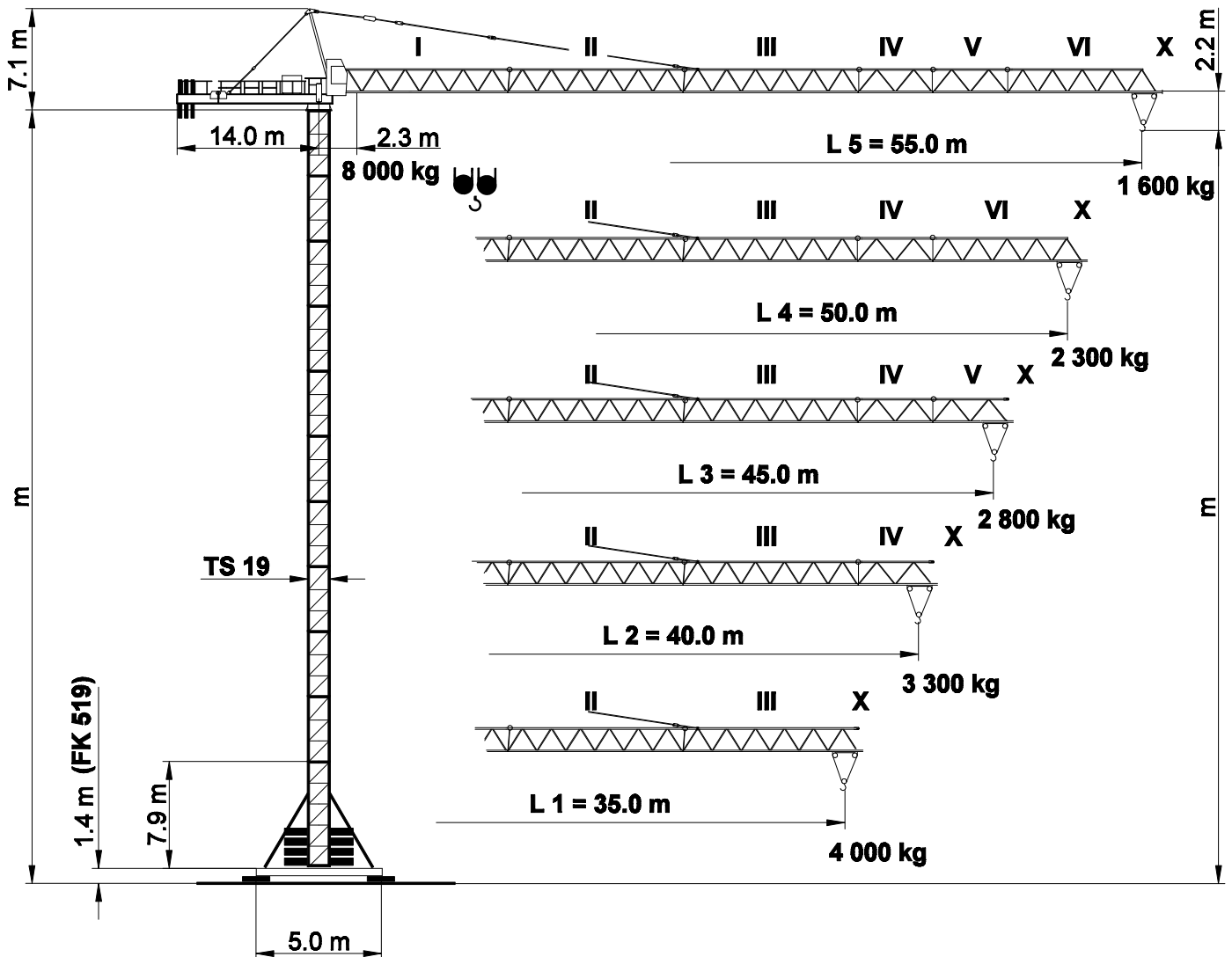
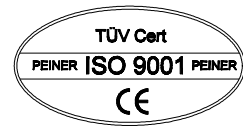


DIN 15018	H1 / B3
BGL 2125	0125
Max. Tragfähigkeit Lifting capacity Force de levage	8.0 t

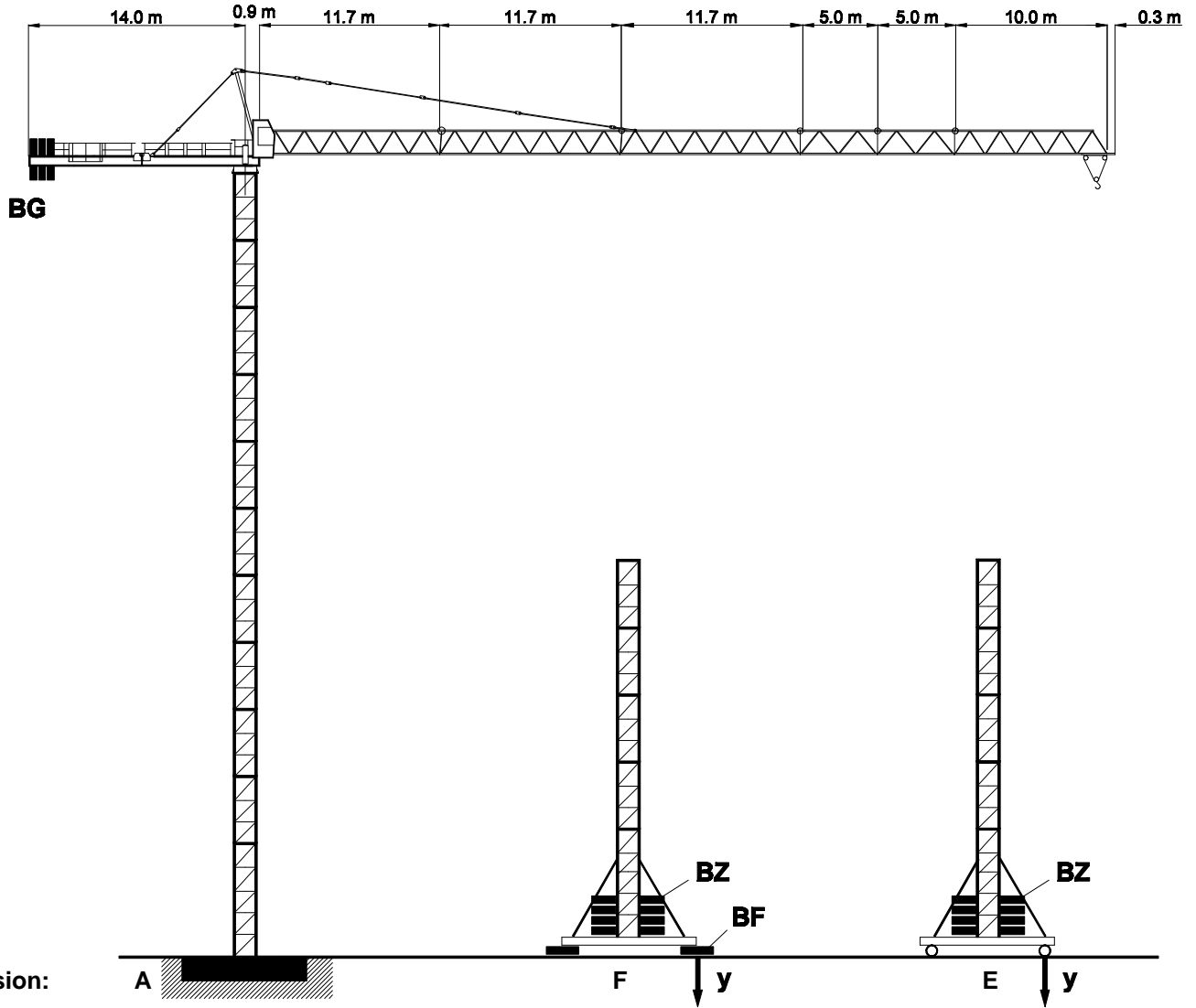
# PEINER SK 126/1



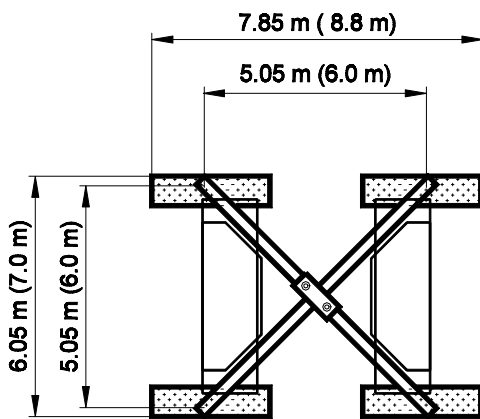
Unsere Vertretung:  
Our representative:  
Notre représentant:

# SK 126/1 Turmkombinationen, Hakenhöhen, Eckkräfte, Zentralballast

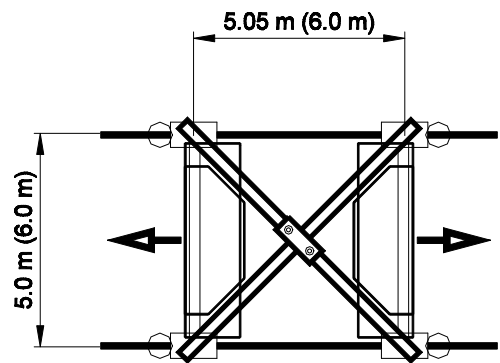
Combinations of tower section, hook heights, forces acting per corner, base ballast  
 Combinations possibles et hauteurs sous crochet, pressions par coin, contrepoids central



**FK 519 / 619**



**FKF 519 / 619**



## Bodenauflagen

Ground support  
 Support sol

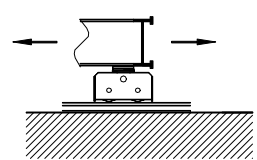
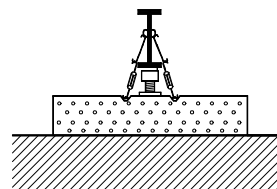
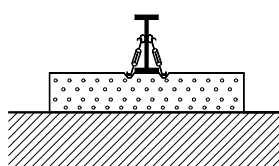
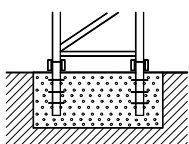
Version:

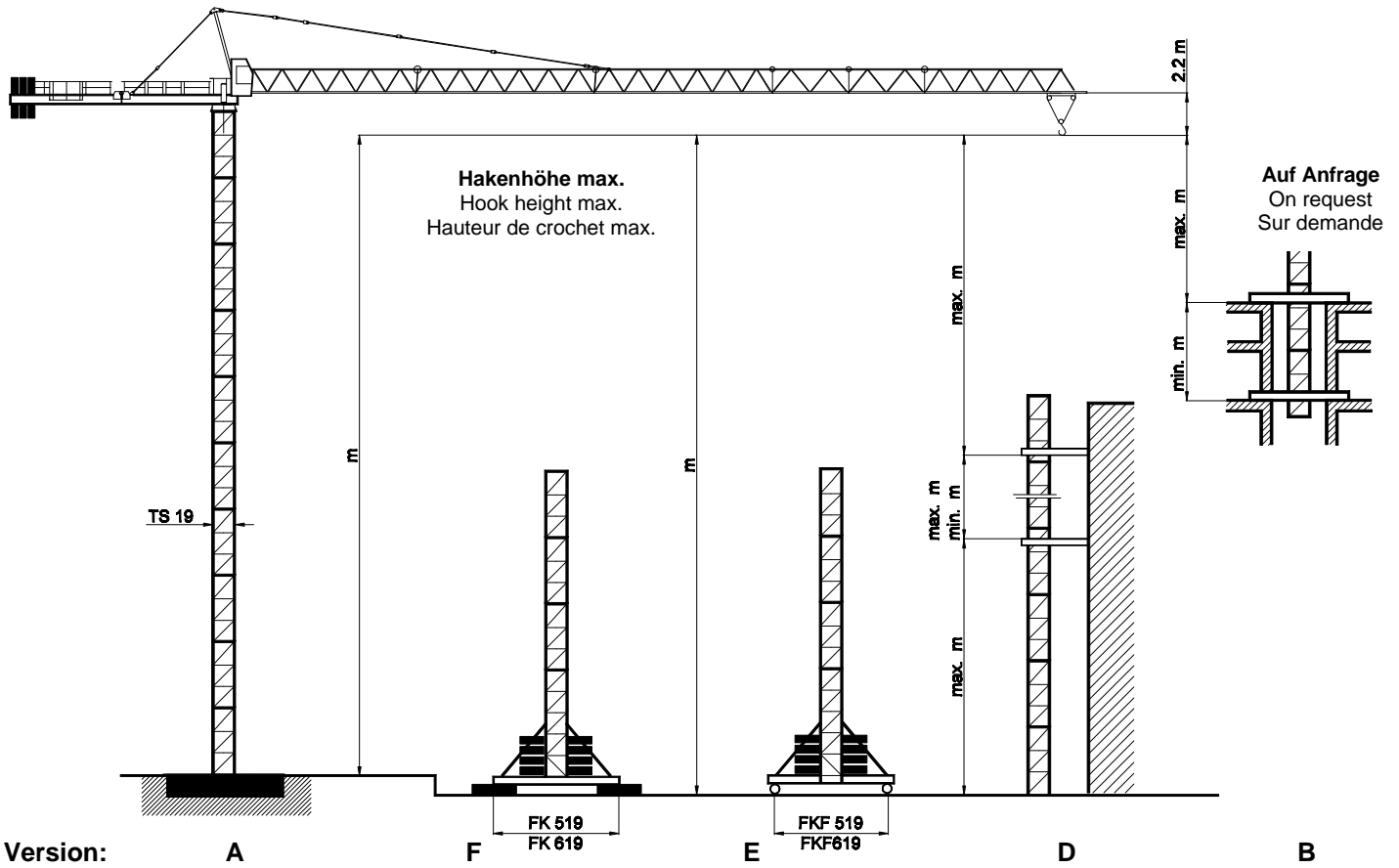
A

F

F / SP

E





TS 19	Version A	Version F						Version E							
Turm Tower, Tour TS 19.1	HK  m	Turm Tower, Tour TSV 19.1 TS 19.1	HK  m	BZ + BF t	i.B. y kN	a.B. y kN	BZ + BF t	i.B. y kN	a.B. y kN	BZ t	i.B. y kN	a.B. y kN	BZ t	i.B. y kN	a.B. y kN
11 x TS 19.1		1 x TSV 19.1 10 x TS 19.1													
10 x TS 19.1		1 x TSV 19.1 9 x TS 19.1													
9 x TS 19.1		1 x TSV 19.1 8 x TS 19.1													
8 x TS 19.1		1 x TSV 19.1 7 x TS 19.1													
7 x TS 19.1		1 x TSV 19.1 6 x TS 19.1													
6 x TS 19.1		1 x TSV 19.1 5 x TS 19.1													
5 x TS 19.1		1 x TSV 19.1 4 x TS 19.1													
4 x TS 19.1		1 x TSV 19.1 3 x TS 19.1													
3 x TS 19.1		1 x TSV 19.1 2 x TS 19.1													
2 x TS 19.1		1 x TSV 19.1 1 x TS 19.1													
1 x TS 19.1		1 x TSV 19.1													
<b>Fundament</b> Foundation Fondaton  7.4 x 7.4 x 1.2 m				<b>Fundamentkreuz</b> Cruciform base Croix de fondation  FK 519		<b>Fundamentkreuz</b> Cruciform base Croix de fondation  FK 619		<b>Fundamentkreuz, kurvenfahrbar</b> Cruciform base, railgoing Croix de fondation, mobile  FKF 519			<b>Fundamentkreuz, kurvenfahrbar</b> Cruciform base, railgoing Croix de fondation, mobile  FKF 619				
<b>Fundamentfüße</b> Fixing angles Ancres de fondation  4 x FF 19				BF 4 x 4.0 t	BZ Block 5.0 t 6.1 t	BF 4 x 4.0 t	BZ Block 5.0 t 6.1 t	<b>Fahrschemel / bogie</b> Kurve / curve / courbe  F 500			<b>Fahrschemel / bogie</b> Kurve / curve / courbe  F 500				

TS 19.1 = 5.9 m

TSV 19.1 = 7.9 m

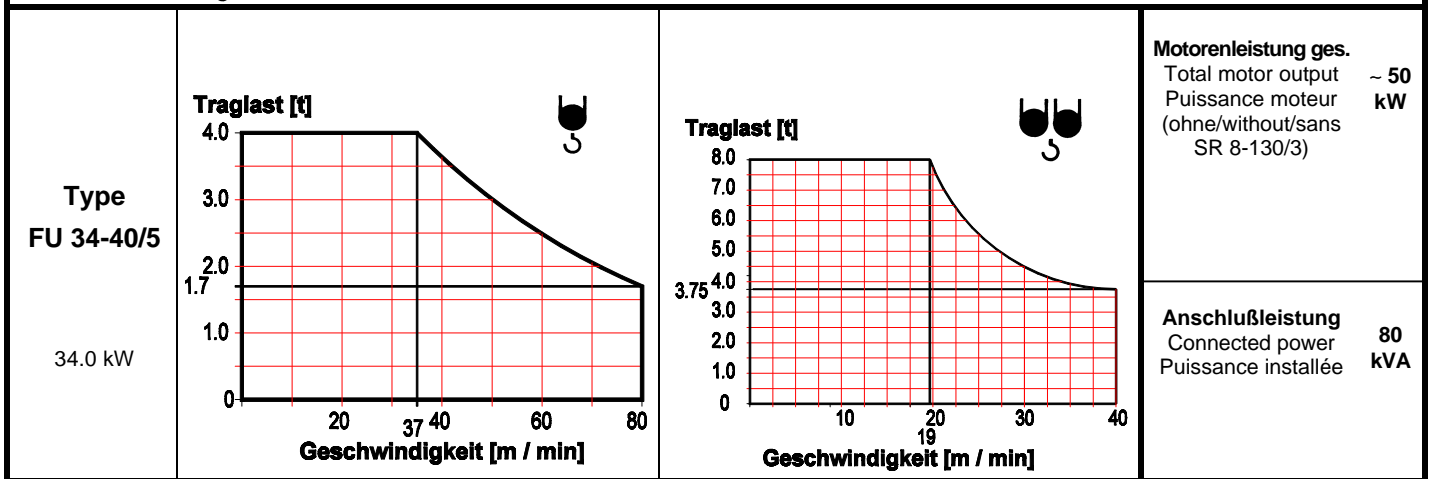
# SK 126/1 Ausladung und Tragfähigkeit / Radius and capacity / Portée et charge

Ausleger Jib Flèche	Max. Tragfähigkeit max. capacity charge max.	Ausladung (m) und Tragfähigkeit (t) Radius (m) and capacity (t) Portée (m) et charge (t)																
		18	21	24	27	30	32	33	34	35	38	40	43	45	48	50	53	55
m	8.0 t																	
L5 55.0	2.3 - 15.0 m	6.47	5.41	4.62	4.01	3.53	3.26	3.14	3.03	2.92	2.63	2.46	2.24	2.11	1.93	1.83	1.69	1.60
L4 50.0	2.3 - 17.6 m	7.82	6.56	5.62	4.90	4.33	4.01	3.86	3.73	3.60	3.25	3.05	2.79	2.63	2.43	2.30		
L3 45.0	2.3 - 18.5 m	8.00	6.92	5.94	5.18	4.58	4.24	4.09	3.95	3.81	3.45	3.24	2.96	2.80				
L2 40.0	2.3 - 18.8 m	8.00	7.03	6.04	5.27	4.66	4.32	4.16	4.02	3.88	3.51	3.30						
L1 35.0	2.3 - 19.2 m	8.00	7.21	6.21	5.43	4.80	4.45	4.29	4.14	4.00								

## Geschwindigkeiten / Speeds / Vitesses

FU 4-80/4		v = 80 m / min.	4.0 kW	400 V 50 Hz 3 Ph
SR 8-130/3		v = 25 m / min.	2 x 7.5 kW	
K SRA 75/4		v = 0.75 min <sup>-1</sup>	2 x 6.0 kW	

HK max. = 120 m 3 - Lagen / 3 - layers / 3 - couches



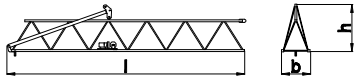
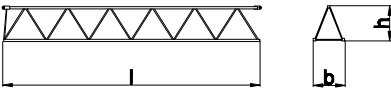
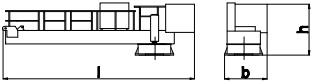
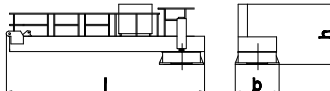
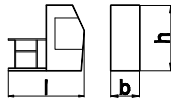
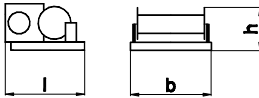
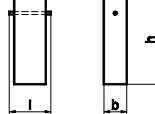
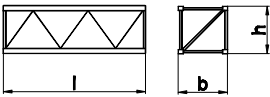
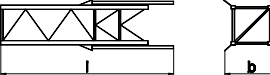
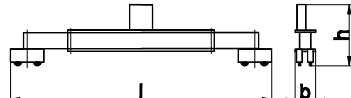
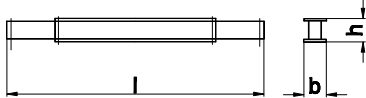
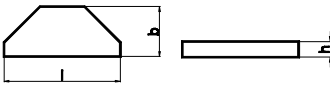
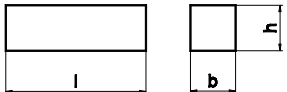
## Gegengewichtsballast / Counterweight / Contrepoids

Ausleger / Jib / Flèche		L 1	L 2	L 3	L 4	L 5
Gegengewicht Counterweight Contrepoids	BG	9 345 kg	10 450 kg	11 450 kg	11 450 kg	12 450 kg
	[t]	3 x 3.15	1 x 4.15 2 x 3.15	2 x 4.15 1 x 3.15	2 x 4.15 1 x 3.15	3 x 4.15 2 x 3.15

# SK 126/1; 136/1 Transportmaße und Transportgewichte

Dimensions and weights of transport  
Dimensions et poids pour transport

Montagegewichte siehe Betriebsanleitung!  
Mounting weights see operating manual!  
Poids de montage voir instruction de service!

Benennung Designation Désignation		Abmessungen (m / ft) Dimensions (m / ft)	Gewicht Weight Poids t / kips			Volumen Volume m³ / ft³
			l	b	h	
1 <b>Ausleger / Jib / Flèche</b> Schuss / Section / Élément I		<b>11.95</b> 39.21	<b>1.38</b> 4.53	<b>2.66</b> 8.73	<b>2.90</b> 6.39	<b>41.3</b> 1550
2 <b>Ausleger / Jib / Flèche</b> Schuss / Section / Élément II		<b>11.95</b> 39.21	<b>1.23</b> 4.04	<b>1.65</b> 5.41	<b>1.43</b> 3.15	<b>24.2</b> 857
Schuss / Section / Élément III		<b>11.95</b> 39.21	<b>1.23</b> 4.04	<b>1.87</b> 6.14	<b>1.37</b> 3.02	<b>27.4</b> 973
Schuss / Section / Élément IV		<b>5.19</b> 17.03	<b>1.25</b> 4.10	<b>1.65</b> 5.41	<b>0.37</b> 0.82	<b>10.7</b> 377
Schuss / Section / Élément V		<b>5.19</b> 17.03	<b>1.25</b> 4.10	<b>1.65</b> 5.41	<b>0.32</b> 0.71	<b>10.7</b> 377
Schuss / Section / Élément VI		<b>10.15</b> 33.30	<b>1.25</b> 4.10	<b>1.65</b> 5.41	<b>0.48</b> 1.06	<b>20.9</b> 738
Seilstation / Jib tip / Bout de flèche X		<b>0.59</b> 1.94	<b>1.23</b> 4.04	<b>0.47</b> 1.54	<b>0.08</b> 0.18	<b>0.4</b> 12
3 <b>Drehbühne mit Drehkranzauflage u. Kabine</b> Turntable with slewing ring support and cabin Plateforme tournante avec support de couronne d'orientation et cabine			<b>9.17</b> 30.11	<b>2.38</b> 7.80	<b>2.53</b> 8.30	<b>7.00</b> 15.43
4 <b>Drehbühne mit Drehkranzauflage</b> Turntable with slewing ring support Plateforme tournante avec support couronne d'orientation		<b>8.17</b> 26.80	<b>2.38</b> 7.80	<b>2.53</b> 8.30	<b>5.30</b> 11.68	<b>49.2</b> 1735
5 <b>Kabine mit Podest und Geländer</b> Cabin with support and railing Cabine avec appui et garde corps		<b>2.96</b> 9.71	<b>1.22</b> 4.00	<b>2.22</b> 7.28	<b>0.60</b> 1.32	<b>8.0</b> 282
6 <b>Hubwinde</b> Hoist winch Mécanisme de levage	<b>FU 34</b> 	<b>1.60</b> 5.25	<b>1.80</b> 5.90	<b>0.65</b> 2.13	<b>1.14</b> 2.51	<b>1.9</b> 66
7 <b>Gegengewichtsballast</b> Counter jib ballast Contrepoids	<b>BG</b> 4.15 t 3.15 t 	<b>1.20</b> 3.94 <b>1.20</b> 3.94	<b>0.50</b> 1.64 <b>0.50</b> 1.64	<b>3.69</b> 12.11 <b>2.84</b> 9.32	<b>4.15</b> 9.1 <b>3.15</b> 6.9	<b>2.2</b> 78 <b>1.7</b> 60
8 <b>Turmschuss</b> Tower section Élément de tour	<b>TS 19.1</b> 	<b>5.93</b> 19.46	<b>2.10</b> 6.89	<b>2.06</b> 6.76	<b>2.62</b> 5.8	<b>25.66</b> 906
mit Streben, with struts, avec étançons	<b>TSV 19.1</b> 					
9 <b>Fundamentkreuz, fahrbar, geklappt</b> Movable undercarriage, folded Châssis roulant, replié	<b>FKF</b> 519 619 	<b>8.25</b> 27.07	<b>1.50</b> 4.92	<b>1.56</b> 5.12	<b>8.80</b> 28.9	<b>19.31</b> 681
10 <b>Fundamentkreuz, stationär, geklappt</b> Stationary undercarriage, folded Châssis fixe, replié	<b>FK</b> 519 619 	<b>7.58</b> 24.87	<b>1.36</b> 4.46	<b>0.95</b> 3.11	<b>5.40</b> 11.9	<b>9.80</b> 345
11 <b>Zentralballaststein</b> Central ballast block Bloc de fondation	<b>BZ</b> 6.1 t 5.0 t 	<b>4.00</b> 13.12 <b>3.50</b> 11.48	<b>1.35</b> 4.43 <b>1.50</b> 4.92	<b>0.65</b> 2.13 <b>0.67</b> 2.20	<b>6.10</b> 13.4 <b>5.00</b> 11.2	<b>3.5</b> 124 <b>3.5</b> 124
12 <b>Fundamentblock</b> Foundation pad Bloc de fondation	<b>BF</b> 	<b>2.80</b> 9.19 <b>2.80</b> 9.19	<b>0.70</b> 2.30 <b>1.00</b> 3.28	<b>0.55</b> 1.80 <b>0.57</b> 1.87	<b>2.70</b> 5.9 <b>4.00</b> 8.82	<b>1.08</b> 38 <b>1.60</b> 57
13 <b>Diverse Montageteile</b> Accessories Accessoires	